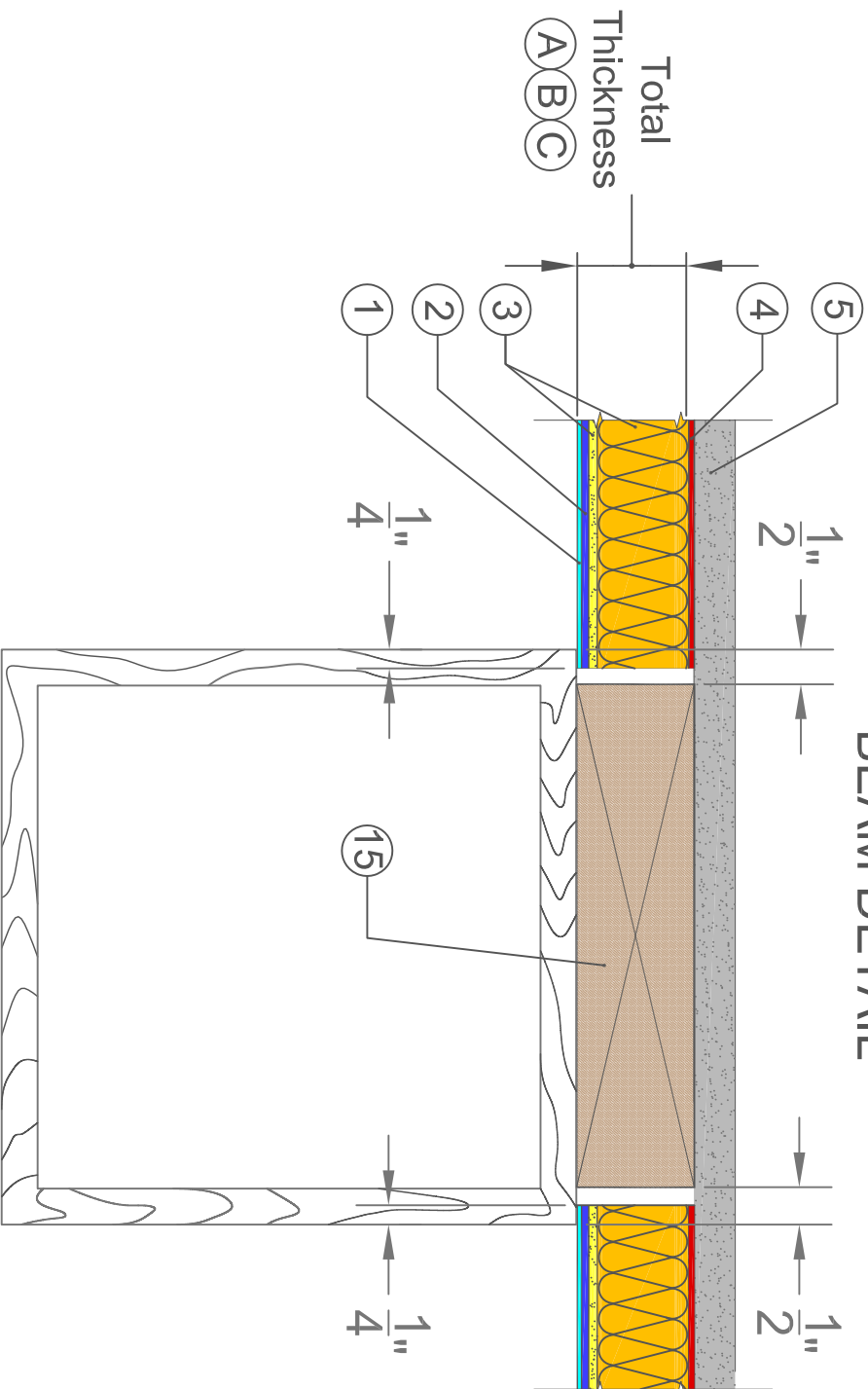


BASW/Aphon - Resilient

BEAM DETAIL



- 1 BASW/Aphon Base 407
- 2 BASW/Aphon Base 407
- 3 BASW/Aphon Pre-Coated Mineral Wool Panel
- 4 BASW/Aphon Adhesive
- 5 Stable Substrate
- 15 Blocking

DIMENSIONS

SYSTEM	(A)	(B)	(C)
TOTAL THICKNESS	1 1/8" (30MM)	1 5/8" (40MM)	2 3/4" (70MM)