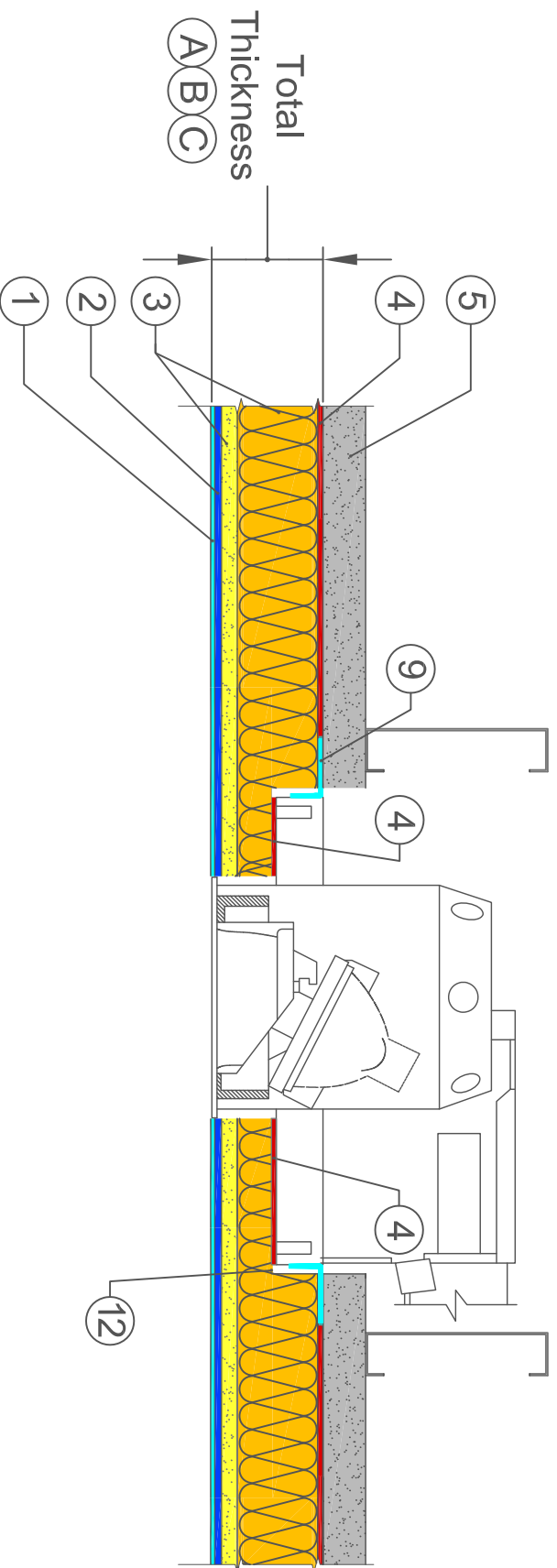


BASWAphon - Resilient

TRIMLESS RECESSED LIGHT FIXTURE DETAIL



- 1 BASW/Aphon Base 407
- 2 BASW/Aphon Base 407
- 3 BASW/Aphon Pre-Coated Mineral Wool Panel
- 4 BASW/Aphon Adhesive
- 5 Stable Substrate
- 9 Fire Tape
- 12 Cut Out Back of Panel

DIMENSIONS			
SYSTEM	(A)	(B)	(C)
TOTAL THICKNESS	1 3/16" (30MM)	1 9/16" (40MM)	2 3/4" (70MM)
FIXTURE ROUGH IN BELOW FACE OF SUBSTRATE	1 3/16"	1 9/16"	2 3/4"