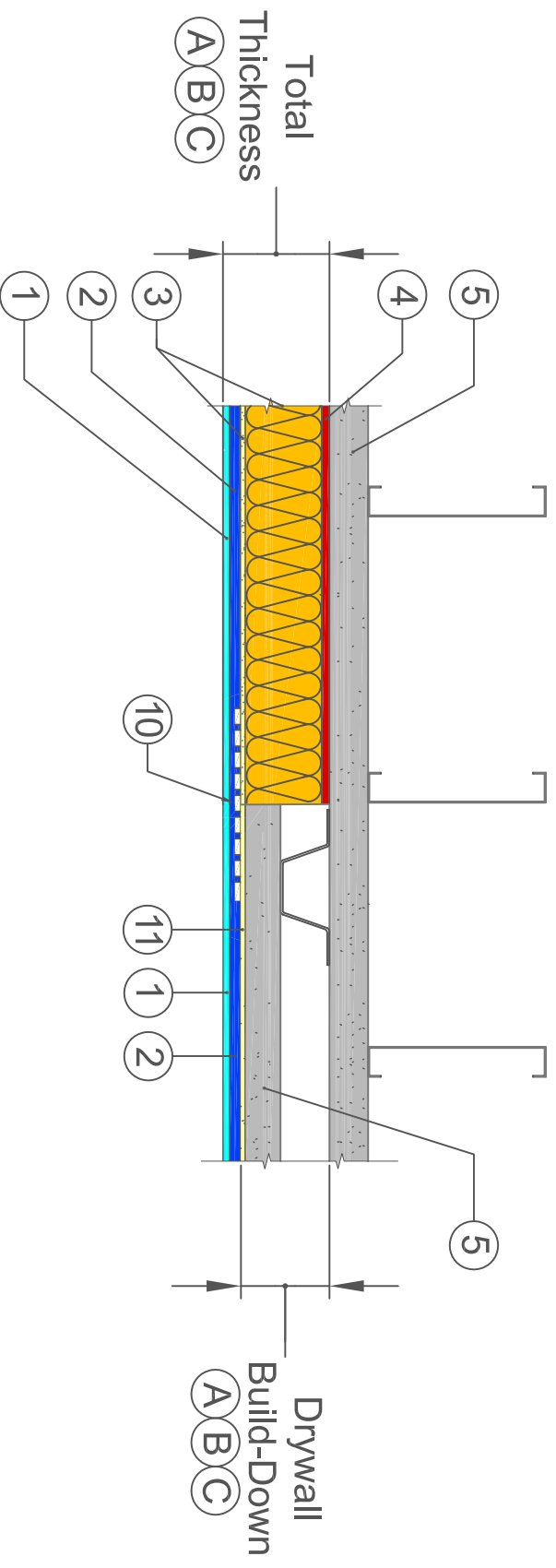


BASW/Aphon - Resilient

DRYWALL TRANSITION DETAIL



- 1 BASW/Aphon Base 407
- 2 BASW/Aphon Base 407
- 3 BASW/Aphon Pre-Coated Mineral Wool Panel
- 4 BASW/Aphon Adhesive
- 5 Stable Substrate
- 10 Fiberglass Mesh Tape
- 11 BASW/Aphon Fill

DIMENSIONS			
SYSTEM	(A)	(B)	(C)
TOTAL THICKNESS	1 3/16" (30MM)	1 9/16" (40MM)	2 3/4" (70MM)
DRYWALL BUILD DOWN BELOW FACE OF SUBSTRATE	7/8"	1 1/4"	2 7/16"