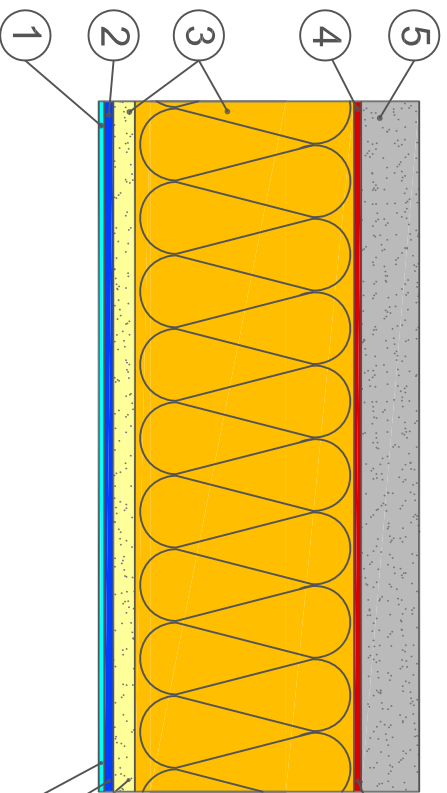


BASWAphon Frosted System



1. BASWAphon Frost 407 Sprayed Finish
2. BASWAphon Base 407 Troweled Finish
3. BASWAphon Pre-Coated Mineral Wool Panel
4. BASWAphon Adhesive
5. Stable Substrate

2.0 mm

1" (26mm used in 30mm System)
1 3/8" (36 mm used in 40mm System)
2 9/16" (66mm used in 70mm System)

4.0 - 6.0mm

2.0 - 3.0 mm

0.5 - 1.0 mm

1- 3/16" Total Thickness
1- 9/16" Total Thickness
2- 3/4" Total Thickness

30mm
40mm
70mm