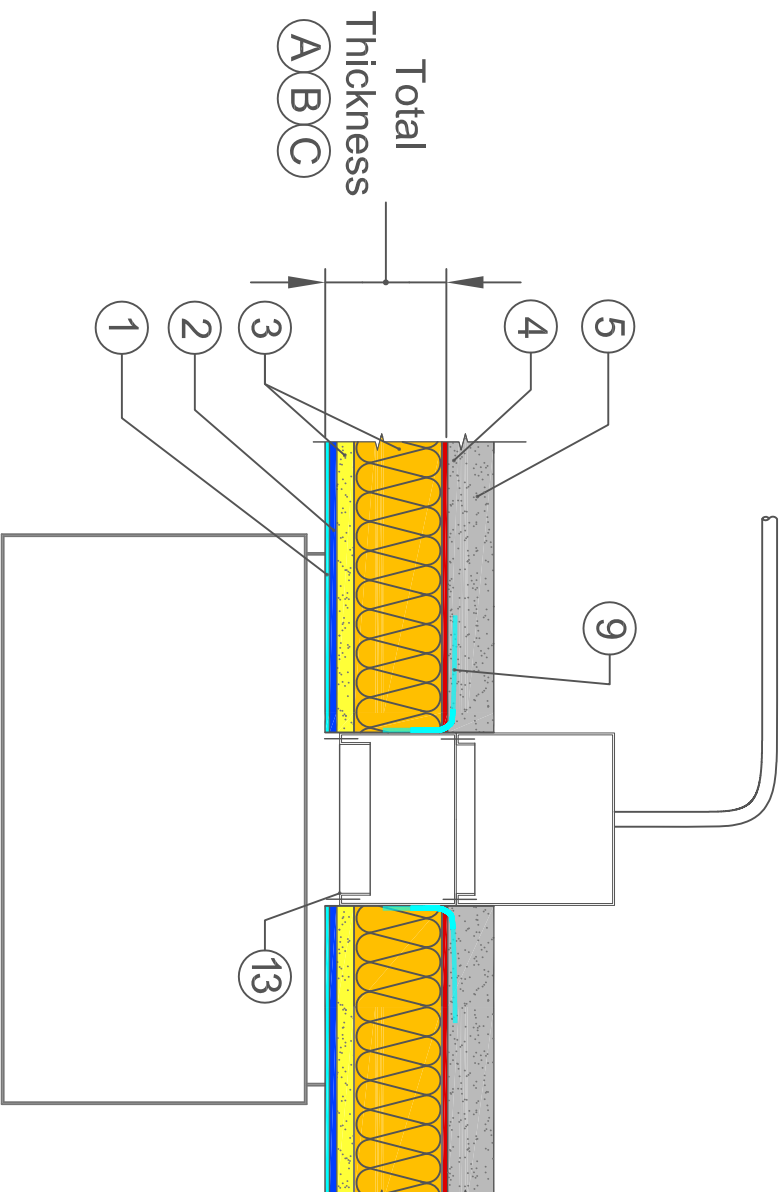


# BASWApphon - Frosted

## SURFACE MOUNTED ELECTRICAL FIXTURE DETAIL



- 1 BASWApphon Frost 407
- 2 BASWApphon Base 407
- 3 BASWApphon Pre-Coated Mineral Wool Panel
- 4 BASWApphon Adhesive
- 5 Stable Substrate
- 9 Fire Tape
- 13 Electrical Junction Box Extension

### DIMENSIONS

SYSTEM	(A)	(B)	(C)
TOTAL THICKNESS	1 3/16" (30MM)	1 9/16" (40MM)	2 3/4" (70MM)
ELECTRICAL JUNCTION BOX ROUGH IN BELOW FACE OF SUBSTRATE	1"	1 3/8"	2 9/16"