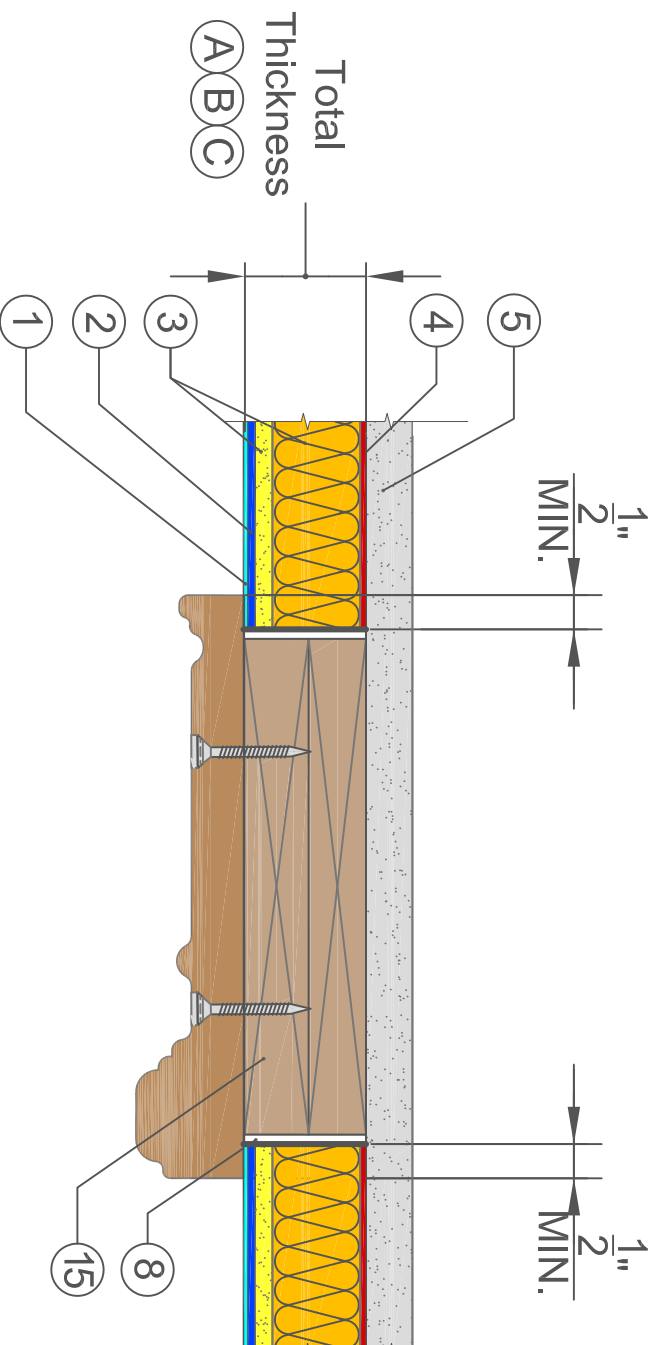


BASWAphton - Frosted

APPLIED MOLDING DETAIL



- 1 BASWAphton Frost 407
- 2 BASWAphton Base 407
- 3 BASWAphton Pre-Coated Mineral Wool Panel
- 4 BASWAphton Adhesive
- 5 Stable Substrate
- 8 Swedish Cut (1/8")
- 15 Blocking

DIMENSIONS

SYSTEM	(A)	(B)	(C)
TOTAL THICKNESS	1 3/16" (30MM)	1 9/16" (40MM)	2 3/4" (70MM)
BLOCKING THICKNESS	1 1/4"	1 5/8"	2 13/16"