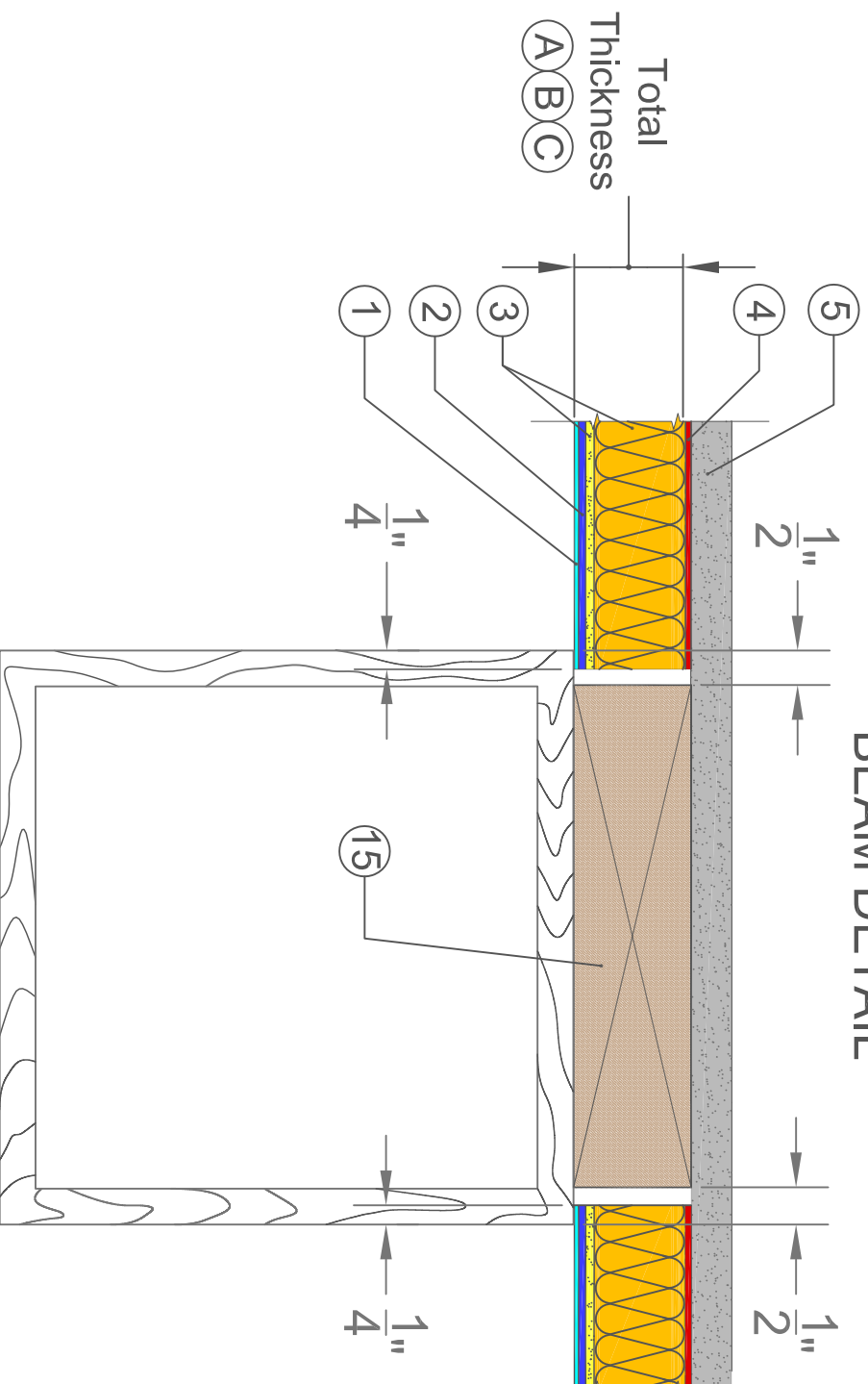


# BASWAphton - Classic

## BEAM DETAIL



- 1 BASWAphton Top
- 2 BASWAphton Base 407
- 3 BASWAphton Pre-Coated Mineral Wool Panel
- 4 BASWAphton Adhesive
- 5 Stable Substrate
- 15 Blocking

### DIMENSIONS

SYSTEM	(A)	(B)	(C)
TOTAL THICKNESS	1 1/8" (30MM)	1 5/8" (40MM)	2 3/4" (70MM)